

Taegu News



TAEGUTEC INDIA EMAIL NEWSLETTER

T-DRILL

Breakthrough Deep Hole Drilling: Unveiling the Power of TaeguTec's T-DRILL

The TaeguTec T-DRILL is a cutting-edge indexable insert drill designed specifically for high-performance deep hole drilling. Unlike traditional twist drills that require frequent sharpening and replacement, the T-DRILL utilizes replaceable cutting inserts, offering significant advantages in efficiency, cost-effectiveness, and hole quality.



Features

1. Enhanced Chip Evacuation for Faster Drilling:

- **Unique flute design:** The T-DRILL features a prominent helical flute that efficiently evacuates chips from the cutting zone. This minimizes chip re-cutting, leading to faster drilling speeds and reduced cycle times.
- **Amplified coolant delivery:** The flutes are strategically designed to channel coolant directly to the cutting edge, optimizing chip cooling and minimizing tool wear.

3. Extended Tool Life and Reduced Costs:

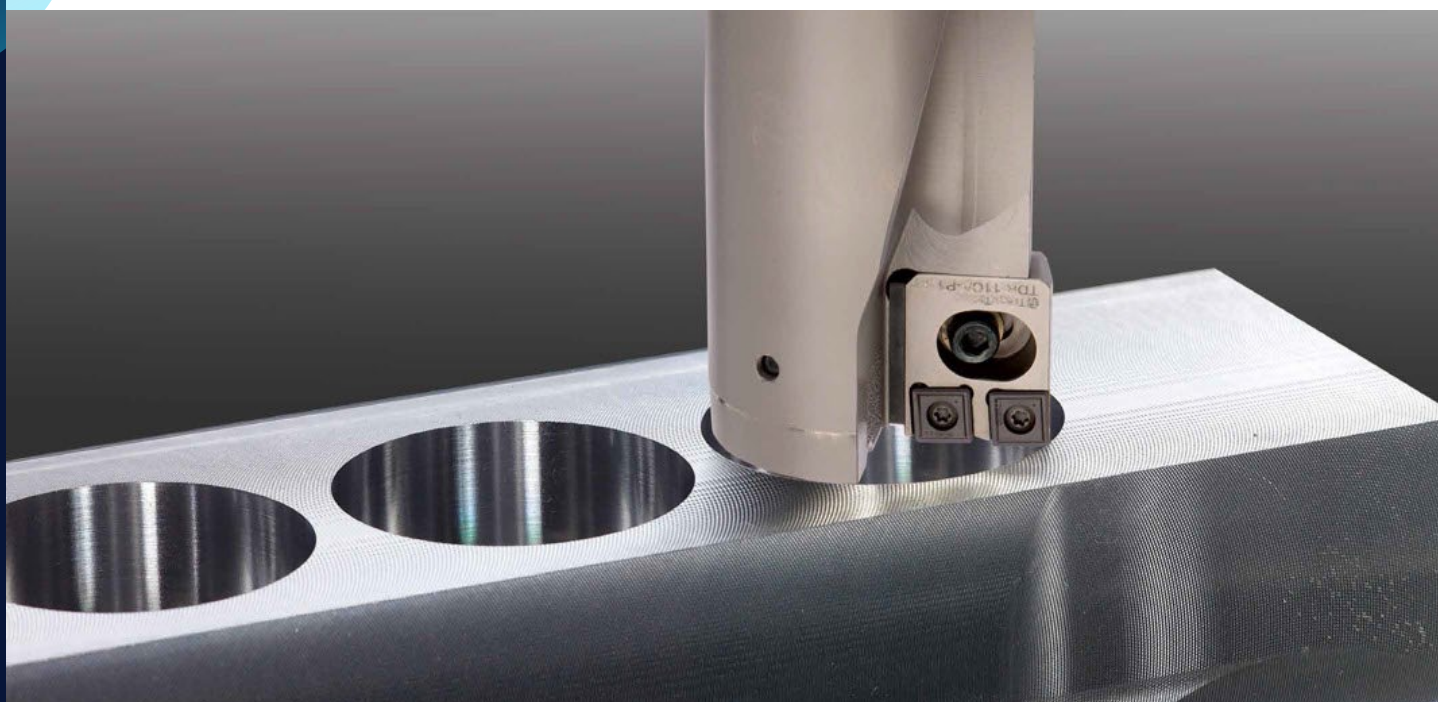
- **Advanced insert coatings:** The T-DRILL inserts are coated with high-performance coatings that provide exceptional wear resistance against abrasion and heat. This significantly increases tool life and reduces the frequency of insert changes, leading to lower overall drilling costs.
- **Cost-effective insert design:** The four-corner cutting edge of the T-DRILL inserts allows for multi-directional indexing. This maximizes insert utilization and minimizes insert consumption, further contributing to cost savings.

2. Unwavering Accuracy and Surface Finish:

- **High-precision inserts:** The T-DRILL utilizes precision-ground inserts with sharp cutting edges. This ensures consistent hole diameters and superior surface finish, eliminating the need for secondary processes like reaming.
- **Rigid drill body:** The T-DRILL boasts a sturdy and vibration-resistant body that maintains dimensional accuracy even during deep hole drilling, further enhancing hole quality.

4. Versatility for Diverse Applications:

- **Wide range of sizes:** The T-DRILL is available in a comprehensive range of diameters, catering to various hole size requirements in deep hole drilling applications.
- **Variety of insert grades:** TaeguTec offers a selection of insert grades specifically designed for different materials, including steel, stainless steel, cast iron, and heat-resistant alloys. This ensures optimal performance and tool life for any drilling task.





The TaeguTec T-DRILL represents a paradigm shift in deep hole drilling technology. By offering superior chip evacuation, exceptional accuracy, extended tool life, and versatility, the T-DRILL empowers manufacturers to achieve:

- Increased productivity: Faster drilling speeds and reduced cycle times translate to higher production output.
- Reduced costs: Extended tool life, minimal insert changes, and cost-effective insert design lead to significant cost savings.
- Enhanced hole quality: Consistent diameters and superior surface finish eliminate the need for reaming, improving overall part quality.
- Greater application flexibility: The diverse range of sizes and insert grades allow the T-DRILL to tackle various deep hole drilling challenges across different industries.

In conclusion, the TaeguTec T-DRILL is not just a drill; it's an investment in your manufacturing efficiency and profitability.

Don't miss the next newsletter: case studies are coming your way!

[For an Enquiry, click here](#)

