

# NPN

New Product News



## Item Designation Changes and New Deep Hole Insert Grades



## KEY POINT

### **T-DEEP line introduces new PVD and CVD grades.**

TaeguTec's popular T-DEEP line for the deep hole drilling market has introduced new PVD and CVD grades along with inserts with smaller corner radii and insert positioning.

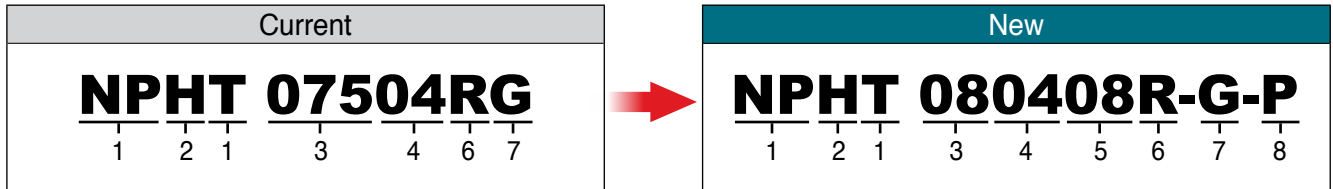
The TT9130 and TT5030 PVD coated grades, along with the recently upgraded TT8125 grade, provide optimum tool life and excellent drilling performance on a wide range of materials.

In addition, inserts with small corner radii have been added to improve machining stability and tool life. Also, existing inserts have been given new designations to indicate the corner radius size as well as the insert position.

For further information, please contact the product manager.

## New insert designations

- Selected insert size changes: 3 digits to 2 digits
- Corner radius size and insert positions added



1: Deep hole drill insert  
3: Insert size  
5: Corner radius  
7: Chip breaker

2: Precision (M: Press, H: Ground)  
4: Thickness  
6: Hand type (R: Right handed, L: Left handed)  
8: Insert position (C: Central, I: Intermediate, P: Peripheral, None: All)

Current
NPHT 06003RG
NPHT 07504RG
NPHT 09004RG
NPHT 11004RG
NPHT 13004RG
NPMT 05503LG
NPMT 06504LG
NPMT 08004LG
NPMT 09504LG
NPMT 12504LG
NPMT 05503RG
NPMT 06504RG
NPMT 08004RG
NPMT 09504RG
NPMT 12504RG



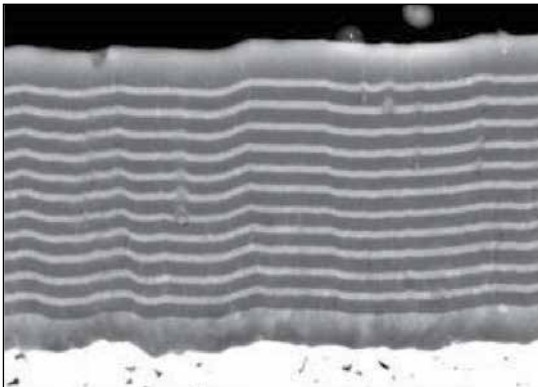
New
NPHT 060308R-G-P
NPHT 080408R-G-P
NPHT 090408R-G-P
NPHT 110408R-G-P
NPHT 130408R-G-P
NPMT 060308L-G-C
NPMT 070408L-G-C
NPMT 080408L-G-C
NPMT 100408L-G-C
NPMT 130408L-G-C
NPMT 060304R-G-I
NPMT 070404R-G-I
NPMT 080404R-G-I
NPMT 100404R-G-I
NPMT 130404R-G-I

Current
NPMX 0803RB
NPMX 0803RG
TPMX 1403RB
TPMX 1403RG
TPMX 1704RB
TPMX 1704RG
TPMX 2405RB
TPMX 2405RG
TPMX 2807RB
TPMX 2807RG
TPMX 1403LG
TPMX 1704LG
TPMX 2405LG



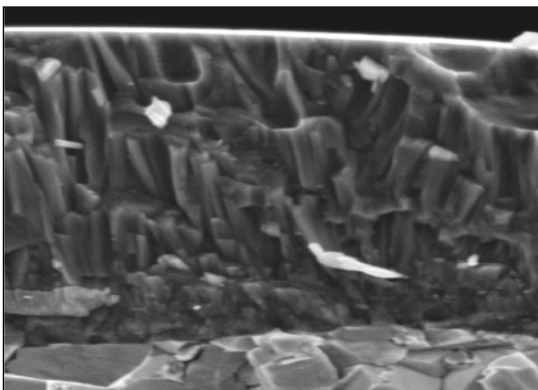
New
NPMX 080308R-B
NPMX 080308R-G
TPMX 140304R-B
TPMX 140308R-G
TPMX 170404R-B
TPMX 170408R-G
TPMX 240504R-B
TPMX 240512R-G
TPMX 280708R-B
TPMX 280716R-G
TPMX 140308L-G
TPMX 170408L-G
TPMX 240512L-G

## TT9130 grade features **new**



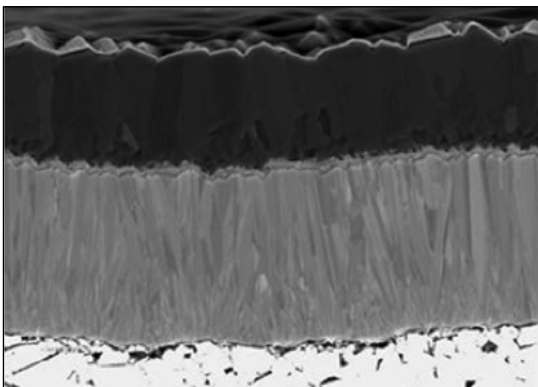
- New PVD coating
- Excellent tool life in ISO P, M materials machining
- The coating surface prevents built-up edges
- Multilayered coating resists wear, oxidation and chipping
- Stronger coating adhesion
- Optimally balanced substrate for wear and fracture resistance

## TT5030 grade features **new**



- New PVD coating
- For ISO M, S, H materials machining
- High Al content and post surface treatment technology minimize built-up edges
- 20% harder coating for excellent wear resistance
- Nano-multilayered coating for great fracture resistance

## Improved TT8125 grade features

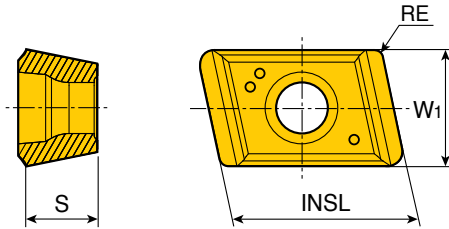


- Improved CVD coating with enhanced surface property
- Maximized tool life in ISO P material machining
- Hard coating layer with high flank wear resistance
- Excellent heat and wear resistance for high-speed machining
- Fracture resistant substrate for improved CVD coating
- 1.7 times thicker compared to the conventional coating layer

## NPHT...R-G-P



### Inserts for TBTA-FB & TRGD



Size	Dimension (mm)			
	W1	INSL	S	RE
<b>06</b>	6.0	8	3.0	0.4/0.8
<b>08</b>	7.5	10	4.0	0.4/0.8
<b>09</b>	9.0	10	4.0	0.4/0.8
<b>11</b>	11.0	10	4.0	0.4/0.8
<b>13</b>	13.0	10	4.0	0.4/0.8

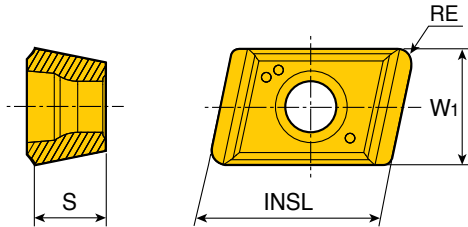
Insert	Designation	Pocket			Coated			
		Center	Inner	Outer	TT9030	<b>new</b> TT9130	TT6130	<b>new</b> TT5030
	<b>NPHT 060304R-G-P</b> <b>new</b>			●	●		●	●
	<b>060308R-G-P</b>			●	●	●	●	●
	<b>080404R-G-P</b> <b>new</b>			●	●		●	●
	<b>080408R-G-P</b>			●	●	●	●	●
	<b>090404R-G-P</b> <b>new</b>			●	●		●	●
	<b>090408R-G-P</b>			●	●	●	●	●
	<b>110404R-G-P</b> <b>new</b>			●	●		●	●
	<b>110408R-G-P</b>			●	●	●	●	●
	<b>130404R-G-P</b> <b>new</b>			●	●		●	●
	<b>130408R-G-P</b>			●	●	●	●	●

●: Standard items



## NPMT...L-G-C

Inserts for TBTA-FB & TRGD



Size	Dimension (mm)			
	W <sub>1</sub>	INSL	S	RE
<b>06</b>	5.5	8	3.0	0.8
<b>07</b>	6.5	10	4.0	0.8
<b>08</b>	8.0	10	4.0	0.8
<b>10</b>	10.0	10	4.0	0.8
<b>13</b>	12.5	10	4.0	0.8

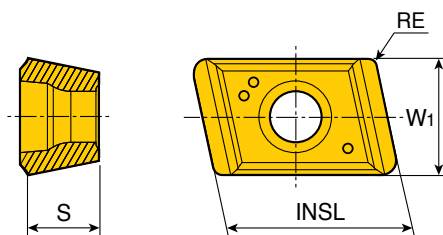
Insert	Designation	Pocket			Coated				
		Center	Inner	Outer	TT9030	<b>new</b> TT9130	TT8125	TT6130	<b>new</b> TT5030
	<b>NPMT 060308L-G-C</b>	●			●	●	●	●	●
	<b>070408L-G-C</b>	●			●	●	●	●	●
	<b>080408L-G-C</b>	●			●	●	●	●	●
	<b>100408L-G-C</b>	●			●	●	●	●	●
	<b>130408L-G-C</b>	●			●	●	●	●	●

●: Standard items

## NPMT...R-G-I



Inserts for TBTA-FB & TRGD



Size	Dimension (mm)			
	W <sub>1</sub>	INSL	S	RE
<b>06</b>	5.5	8	3.0	0.4
<b>07</b>	6.5	10	4.0	0.4
<b>08</b>	8.0	10	4.0	0.4
<b>10</b>	10.0	10	4.0	0.4
<b>13</b>	12.5	10	4.0	0.4

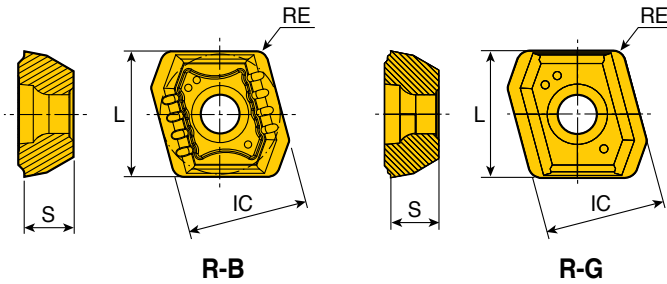
Insert	Designation	Pocket			Coated				
		Center	Inner	Outer	TT9030	<b>new</b> TT9130	TT8125	TT6130	<b>new</b> TT5030
	<b>NPMT 060304R-G-I</b>		●		●	●	●	●	●
	<b>070404R-G-I</b>		●		●	●	●	●	●
	<b>080404R-G-I</b>		●		●	●	●	●	●
	<b>100404R-G-I</b>		●		●	●	●	●	●
	<b>130404R-G-I</b>		●		●	●	●	●	●

●: Standard items



## NPMX...R-B/R-G

Inserts for TBTA...3/5/7/9



Size	Dimension (mm)			
	IC	L	S	RE
<b>08</b>	8.0	8.36	3.18	0.8

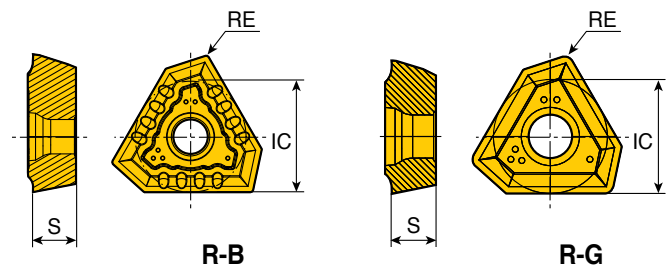
Insert	Designation	Pocket			Coated				
		Center	Inner	Outer	TT9030	TT8125	TT6130	TT6020	TT5100
	<b>NPMX 080308R-B</b>	●	●	●	●	●	●		
	<b>080308R-G</b>	●	●	●	●	●		●	●

●: Standard items

## TPMX...R-B/R-G



Inserts for TBTA...3/5/7/9 & TBTA-R



Size	Dimension (mm)		
	IC	S	RE
<b>140304 R-B</b>	8.45	3.5	0.4
<b>140308 R-B/R-G</b>	8.45	3.5	0.8
<b>170404 R-B</b>	10.30	4.0	0.4
<b>170408 R-B/R-G</b>	10.30	4.0	0.8
<b>240504 R-B</b>	14.20	5.5	0.4
<b>240512 R-B/R-G</b>	14.20	5.5	1.2
<b>280708 R-B</b>	17.00	7.5	0.8
<b>280716 R-B/R-G</b>	17.00	7.5	1.6

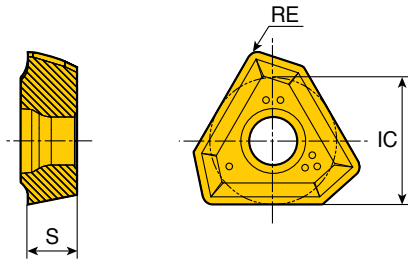
Insert	Designation	Pocket			Coated							
		Center	Inner	Outer	TT9030	<b>new</b> TT9130	TT8125	TT7200	TT6130	TT6020	TT5100	<b>new</b> TT5030
	<b>TPMX 140304R-B</b>	●	●	●	●		●		●			
	<b>140308R-B (new)</b>	●	●	●	●	●						●
	<b>140308R-G</b>	●	●	●	●	●	●	●		●	●	●
	<b>170404R-B</b>	●	●	●	●		●		●			
	<b>170408R-B (new)</b>	●	●	●	●	●						●
	<b>170408R-G</b>	●	●	●	●	●	●	●		●	●	●
	<b>240504R-B</b>	●	●	●	●		●		●			
	<b>240512R-B (new)</b>	●	●	●	●	●						●
	<b>240512R-G</b>	●	●	●	●	●	●	●		●	●	●
	<b>280708R-B</b>	●	●	●	●		●		●			
	<b>280716R-B (new)</b>	●	●	●	●	●	●	●				●
<b>280716R-G</b>	●	●	●	●	●	●	●		●	●	●	

●: Standard items

## TPMX...L-G



### Inserts for TBTA-R



Size	Dimension (mm)		
	IC	S	RE
<b>14</b>	8.45	3.5	0.8
<b>17</b>	10.30	4.0	0.8
<b>24</b>	14.20	5.5	1.2

Insert	Designation	Pocket			Coated			
		Center	Inner	Outer	TT9030	<b>new</b> TT9130	TT6020	<b>new</b> TT5030
	<b>TPMX 140308 L-G</b>			●	●			●
	<b>170408 L-G</b>			●	●	●	●	●
	<b>240512 L-G</b>			●	●	●	●	●

●: Standard items