

NPN

New Product News



Drill Sleeves for Swiss Type Automatic Lathes



KEY POINT

TaeguTec has launched drill sleeves that can be used on Swiss type automatic lathes.

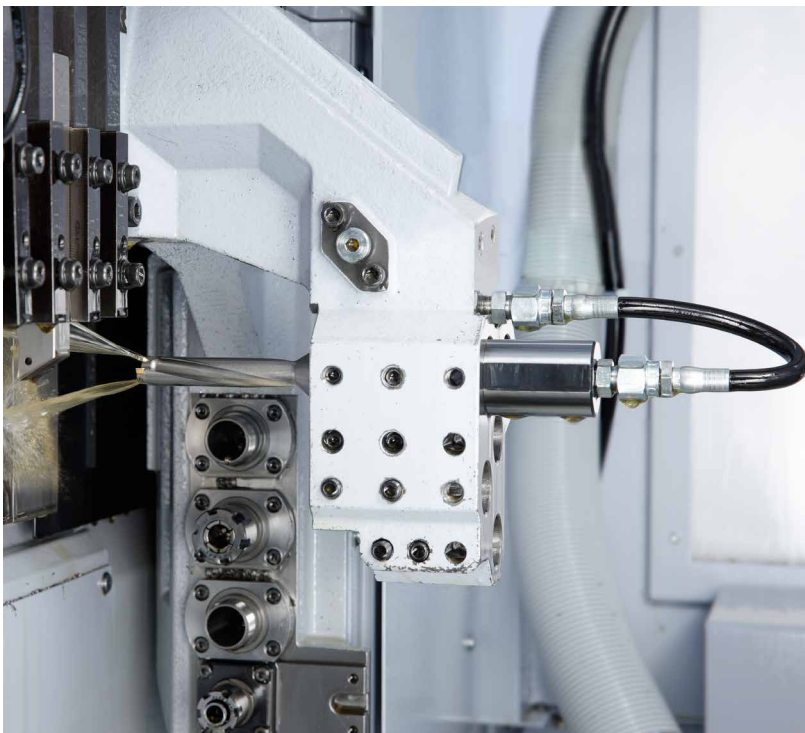
TaeguTec has released exclusive drill sleeves for its DRILL-RUSH and TOP-DRILL lines – now established as the best solution for drilling operations due to their excellent performance – to be applied to Swiss type automatic lathes.

The new exclusive sleeves are available in two types: fixed tightening length type sleeve (TSL-NC) and adjustable tightening length type sleeve (TSL-SW), and an internal coolant system with an coolant hose allowing for higher cutting performance and increased tool life through improved chip evacuation and effective cooling.

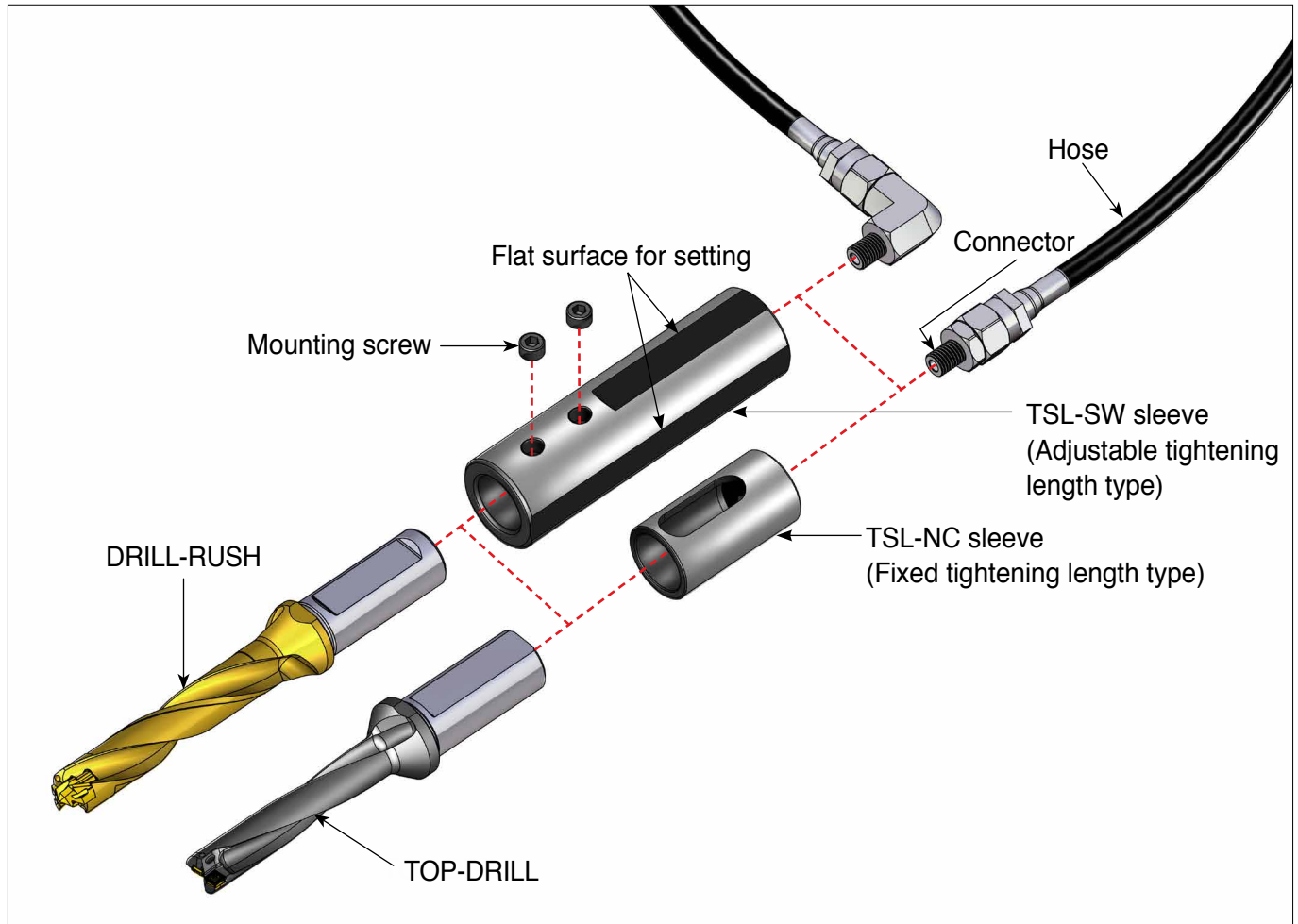
Especially suited for adjustable tightening length type sleeves, adjusting the length of the drill can effectively reduce the vibration that may occur during machining. This ensures more reliable performance.

Features

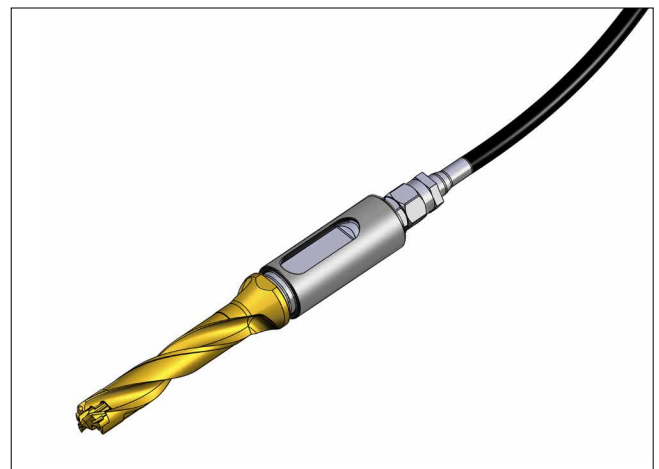
- Optimized drill sleeves for Swiss type automatic lathes
 - Fixed tightening length type sleeve (TSL-NC)
 - Adjustable tightening length type sleeve (TSL-SW)
- Easy internal coolant system with coolant hose set
 - Improved chip evacuation and increased tool life
- Applicable to all Swiss type automatic lathes and CNC lathes due to various sleeve specifications



Drill sleeve components for Swiss type automatic lathes



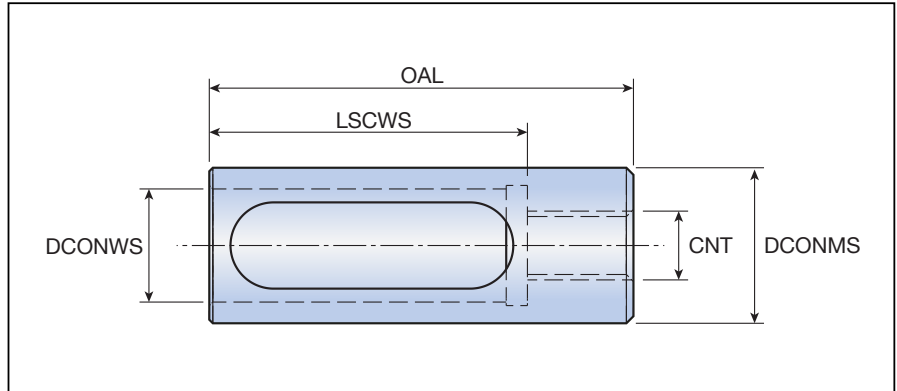
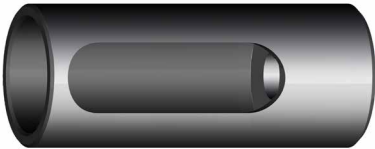
TSL-SW
(Adjustable tightening length)



TSL-NC
(Fixed tightening length)

TSL-NC

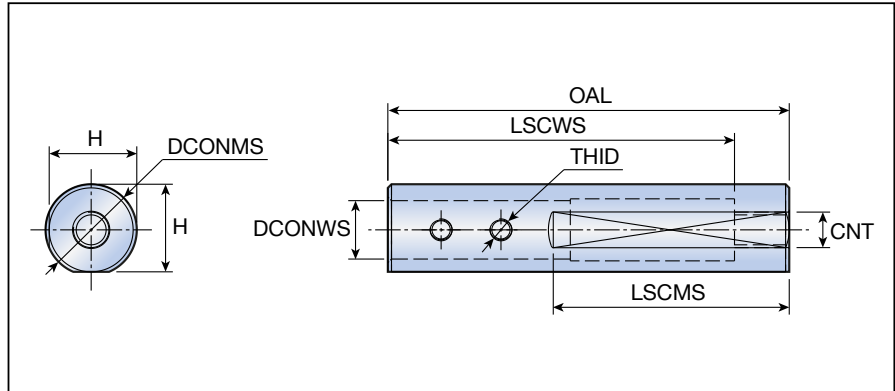
Drill sleeves for Swiss type automatic lathes (Fixed type, internal coolant)



Designation	Dimension (mm)				
	DCONMS	DCONWS	LSCWS	OAL	CNT
TSL-NC 19.05-12	19.05	12.0	45	60	Rc 1/8
19.05-16	19.05	16.0	45	60	Rc 1/8
20-12	20.0	12.0	45	60	Rc 1/8
20-16	20.0	16.0	45	60	Rc 1/8
22-16	22.0	16.0	45	60	Rc 1/8
25-20	25.0	20.0	45	60	Rc 1/8
25.4-20	25.4	20.0	45	60	Rc 1/8
32-25	32.0	25.0	45	60	Rc 1/8



TSL-SW

Drill sleeves for Swiss type automatic lathes (Adjustable type, internal coolant)



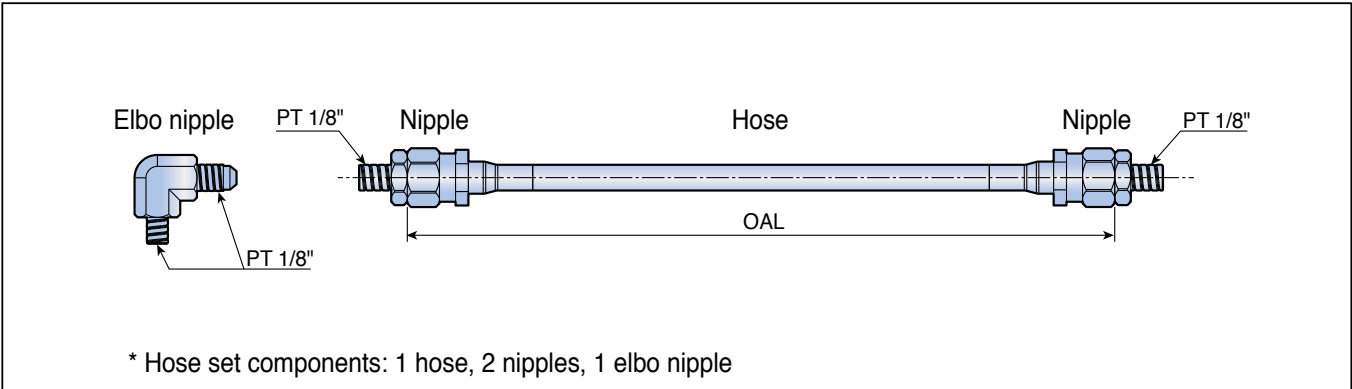
Designation	Dimension (mm)							
	DCONMS	DCONWS	LSCWS	LSCMS	OAL	H	THID	CNT
TSL-SW 22-12	22.0	12.0	95	65	110	21.0	M6	Rc 1/8
25-12	25.0	12.0	95	65	110	24.0	M8	Rc 1/8
25-16	25.0	16.0	95	65	110	24.0	M6	Rc 1/8
25.4-12	25.4	12.0	95	65	110	24.4	M8	Rc 1/8
25.4-16	25.4	16.0	95	65	110	24.4	M6	Rc 1/8
32-12	32.0	12.0	95	65	110	31.0	M8	Rc 1/8
32-16	32.0	16.0	95	65	110	31.0	M8	Rc 1/8
32-20	32.0	20.0	95	65	110	31.0	M8	Rc 1/8

Spare parts

Designation	Mounting screw	Wrench			
					
TSL-SW 22-12	SS M6X1X5	L-W 3			
TSL-SW 25-12	SS M8X1.25X6	L-W 4			
TSL-SW 25-16	SS M6X1X5	L-W 3			
TSL-SW 25.4-12	SS M8X1.25X6	L-W 4			
TSL-SW 25.4-16	SS M6X1X5	L-W 3			
TSL-SW 32-12	SS M8X1.25X6	L-W 4			
TSL-SW 32-16	SS M8X1.25X6	L-W 4			
TSL-SW 32-20	SS M8X1.25X6	L-W 4			

Accessories

Hose set



Designation	Dimension (mm)	
	OAL (mm)	Max. pressure (bar)
S-TSL HOSE R1/8-220	220	100
R1/8-350	350	100

• Hose set is ordered separately