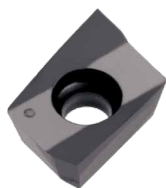


NEW PRODUCT NEWS

CHASEMILL



Now Available for Swiss Turn
Machines AXCT 06-L Inserts,
Holders for Miniature Machining



KEY POINT

Now available in the CHASEMILL product line, the AXCT 06-L inserts and holders for miniature machining used in Swiss turn machines.

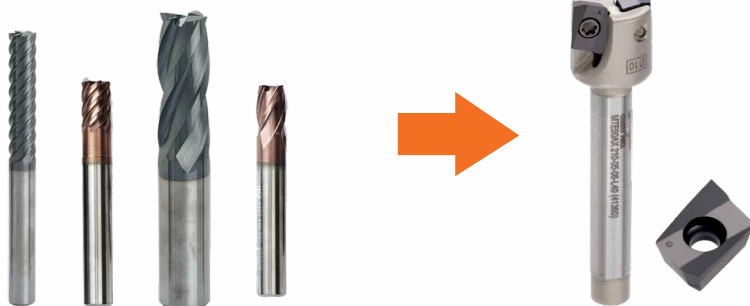
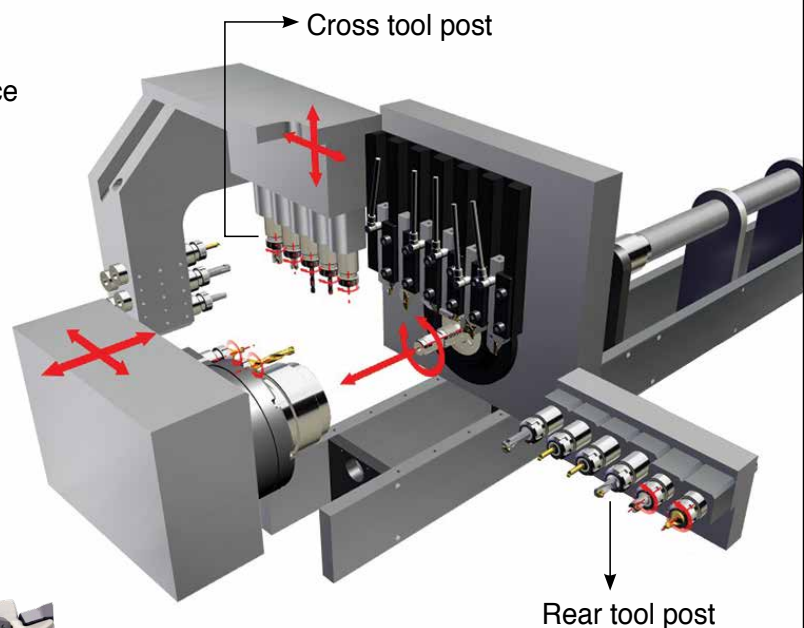
With the overall market trend for miniature product machining expanding due to medical instruments and precision products, TaeguTec has introduced the **AXCT 06-L** line of inserts and related holders specialized in the machining of these products.

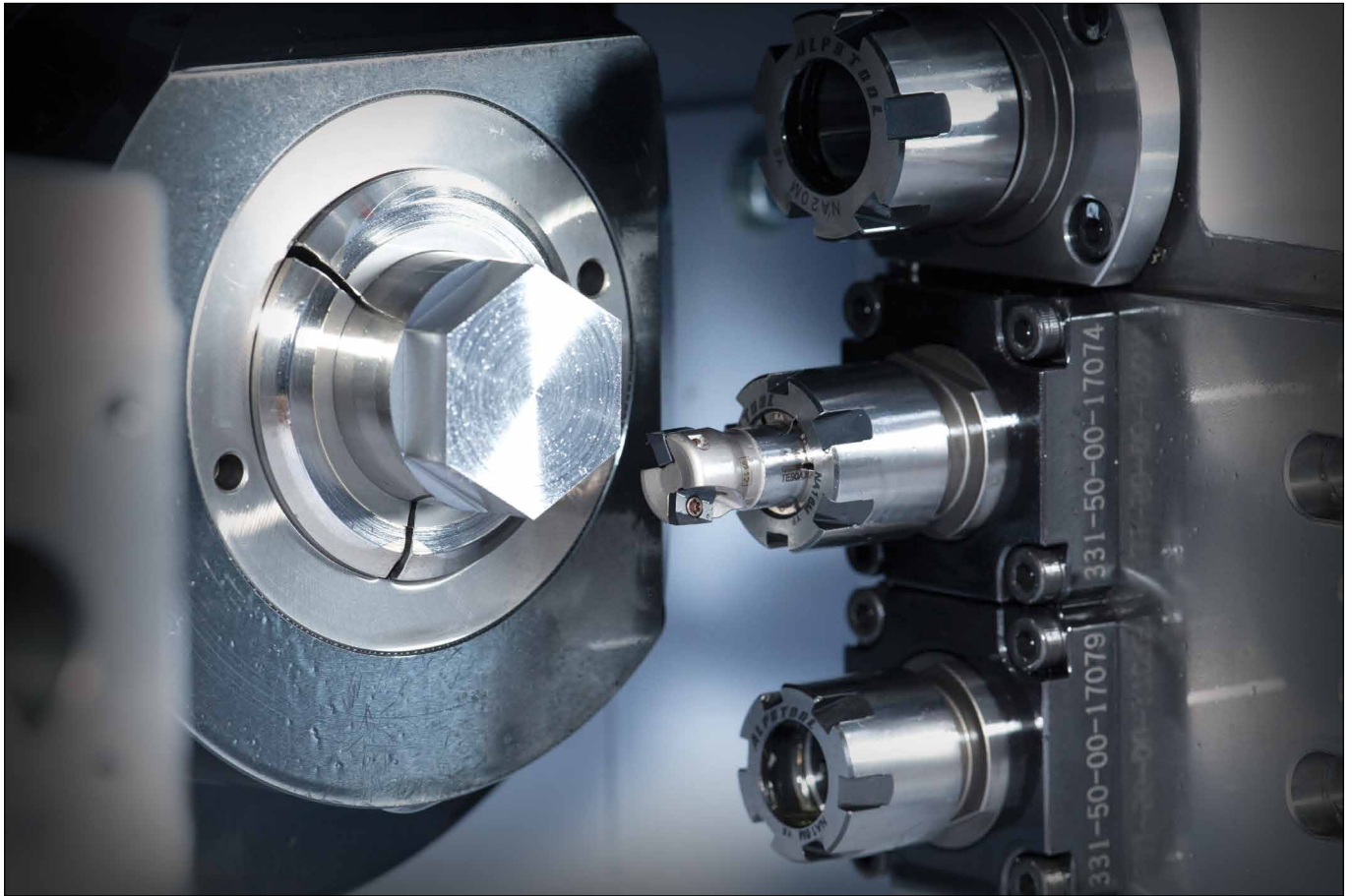
The positive and ground **AXCT 06-L** insert is designed with a high positive rake angle so as to be optimally suited for low cutting resistance as required by miniature machining. A further advantage of the line is its compatibility with the current line of **CHASEMILL** cutters.

All holders are available in various standard sizes from 8 mm up to 30 mm which reinforces the line's suitability for miniature machining.

Features

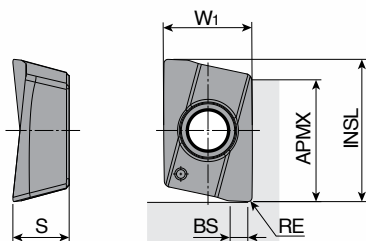
- Specialized insert geometry for Swiss turn machines
- Standard holders are available in various shank holder sizes (Available in ER11 and ER16 collets)
- Holder diameter range: 8-30 mm
- High positive rake angle means low cutting resistance
- AXCT 06-L inserts are compatible with existing CHASEMILL holders
- Available in several insert Corner R: 0,0.2,0.4 mm
- This indexable line can replace solid end mills used in the cross tool post and rear tool post





AXCT 06-L

Insert



Size	Dimension (mm)					
	INSL	W1	S	APMX	BS	RE
06	6.5	4.2	2.6	5.5	0.6-1.0	0-0.4

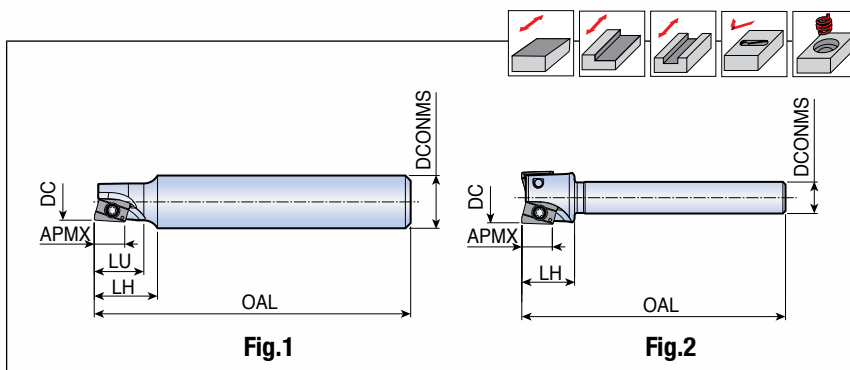


Insert	Designation	Recommended machining conditions		Coated
		Feed (mm/tooth)	ap (mm)	TT5525
	AXCT 060200R-L	0.03-0.08	0.1-5.0	●
	060202R-L	0.03-0.10	0.2-5.0	●
	060204R-L	0.03-0.10	0.3-5.0	●

●: Standard

MTE90AX-06-L...

End mill



Designation		Dimension (mm)						Fig.	Insert
		DC	DCONMS	OAL	LU	LH	APMX		
MTE90AX 108-10-06-L60	1	8	10	60	9	12	5.5	1	AXCT 06-L
210-05-06-L40	2	10	5	40	-	10	5.5	2	
210-06-06-L50	2	10	6	50	-	10	5.5	2	
210-07-06-L50	2	10	7	50	-	10	5.5	2	
210-10-06-L50	2	10	10	50	10	12	5.5	1	
212-10-06-L50	2	12	10	50	-	10	5.5	2	
214-10-06-L50	2	14	10	50	-	10	5.5	2	
315-05-06-L40	3	15	5	40	-	10	5.5	2	
316-07-06-L50	3	16	7	50	-	10	5.5	2	
316-10-06-L50	3	16	10	50	-	10	5.5	2	
320-07-06-L50	3	20	7	50	-	10	5.5	2	
320-10-06-L50	3	20	10	50	-	10	5.5	2	
530-10-06-L50	5	30	10	50	-	10	5.5	2	

Spare parts

Designation	Screw	Wrench			
MTE90AX-06-L...	TS 180411/HG	TD 6P			