

# MNL

Marketing News Letter



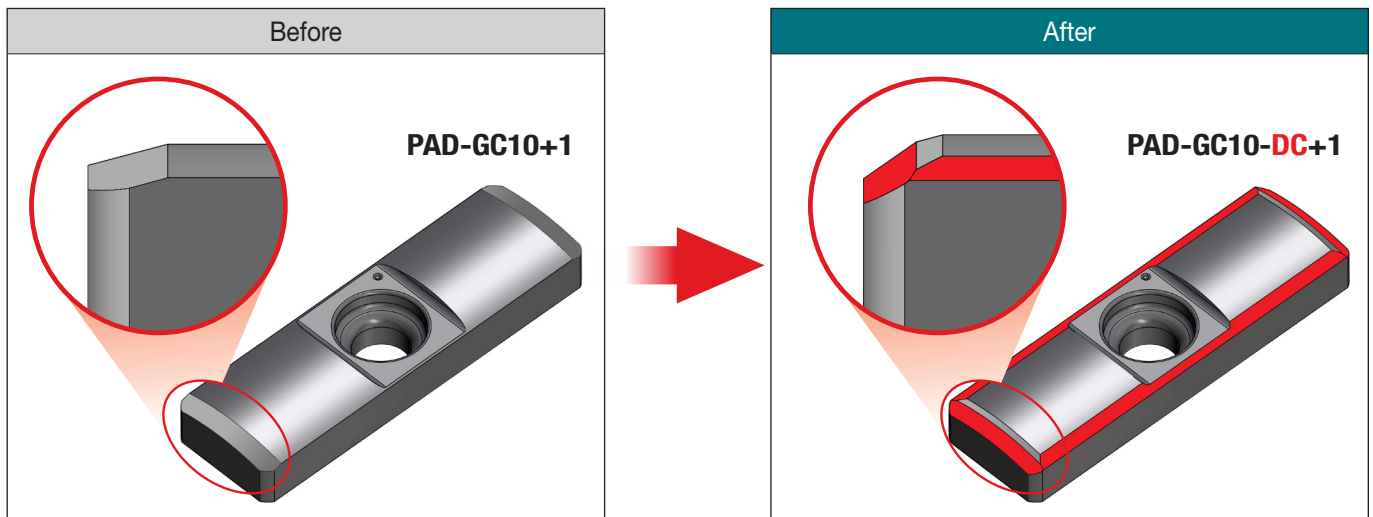
## Improved Plus Guide Pads for TBTA Drills

### KEY POINT

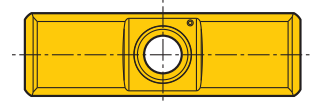
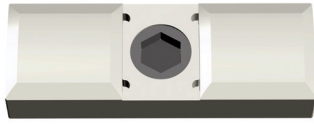
TaeguTec's TBTA drill line Plus Guide Pads now feature double-chamfered corners.

TaeguTec's T-DEEP BTA system line has served as an excellent option in greater than 10xD drilling. The line's Plus Guide Pads (Plus Cartridges included) enable expansion of the TBTA drilling diameter up to 5 mm in 1 mm increments.

The Plus Guide Pads, with double-chamfered corners, enable smooth drilling entry, minimize pad breakage during drilling operations, and result in improved tool life. The improved Plus Guide Pads, which come with a new designation, including DC (Double Chamfer), will be available after current inventories run out.



## Plus Guide Pad for TBTA 3.../5.../7.../9...



- Plus guide pad for diameter enlargement

Designation								
Dia. increments	PAD-GC08	S	PAD-GC10	S	PAD-GC14	S	PAD-GC18	S
+1mm	<b>PAD-GC08-DC+1</b>	5.0	<b>PAD-GC10-DC+1</b>	6.5	<b>PAD-GC14-DC+1</b>	8.0	<b>PAD-GC18-DC+1</b>	9.5
+2mm	<b>PAD-GC08-DC+2</b>	5.5	<b>PAD-GC10-DC+2</b>	7.0	<b>PAD-GC14-DC+2</b>	8.5	<b>PAD-GC18-DC+2</b>	10.0
+3mm	<b>PAD-GC08-DC+3</b>	6.0	<b>PAD-GC10-DC+3</b>	7.5	<b>PAD-GC14-DC+3</b>	9.0	<b>PAD-GC18-DC+3</b>	10.5
+4mm	-	-	<b>PAD-GC10-DC+4</b>	8.0	<b>PAD-GC14-DC+4</b>	9.5	<b>PAD-GC18-DC+4</b>	11.0
+5mm	-	-	-	-	<b>PAD-GC14-DC+5</b>	10.0	<b>PAD-GC18-DC+5</b>	11.5

### Examples

Drill holder	Dia. increments	Guide pad	Cartridge	Diameter (mm)
TBTA3-45.00SE4-39	-	<b>PAD-GP10-35-200-DC-SB</b>	<b>PERC 402-04</b>	45.00
	+1mm	<b>PAD-GC10-DC+1</b>	<b>PERC 402-04+1</b>	46.00
	+2mm	<b>PAD-GC10-DC+2</b>	<b>PERC 402-04+2</b>	47.00
	+3mm	<b>PAD-GC10-DC+3</b>	<b>PERC 402-04+3</b>	48.00