

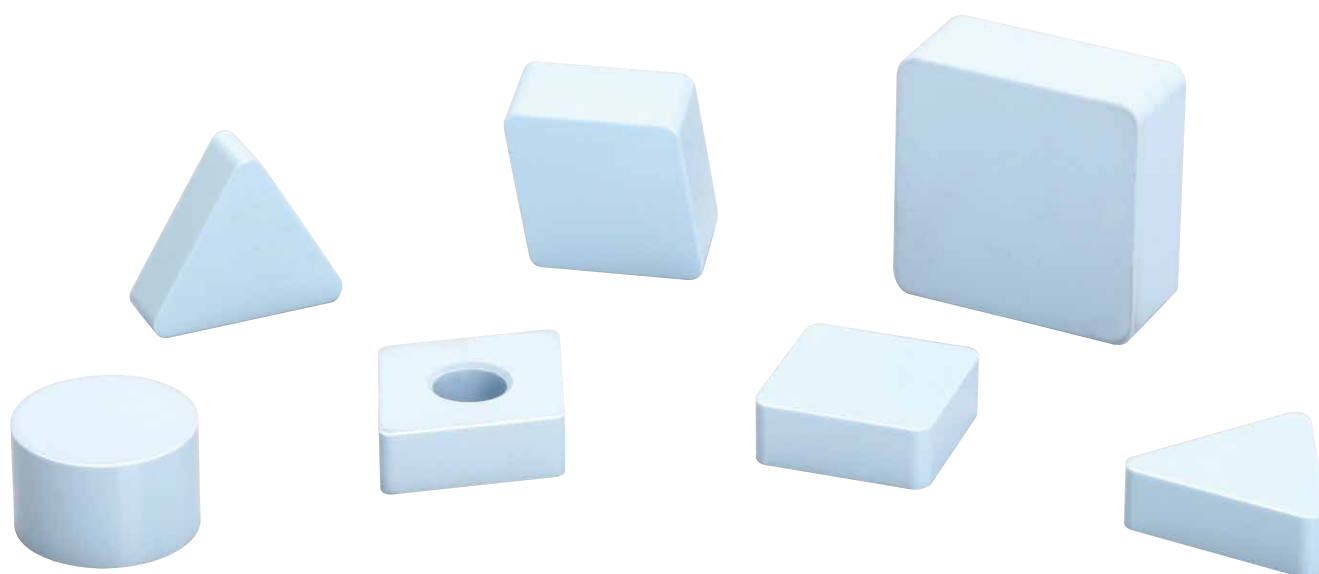
NEW PRODUCT NEWS

ISO TURN



AW120

New ceramic grade for high speed cast iron turning



AW120

New ceramic grade for high speed cast iron turning

FEATURES

- **Excellent oxidation resistance and chemical stability**
- **Finish/semi-finish/roughing of cast iron under high cutting speed conditions**
- **Particularly adapted to cylinder lining machining where high cutting speed, dry machining is prevalent**
- **PVD coating layer improves notch wear in continuous machining**
(Coating is available as request)

TaeguTec is pleased to announce a brand new ceramic insert turning line.

The AW120 ceramic grade has excellent oxidation resistance, high chemical stability as well as temperature resistance that prolong tool life under high cutting speed conditions.

The AW120 insert is also capable of finishing, semi-finishing and roughing applications on cast iron under high cutting speed conditions, further adding to its economy and productivity.

With these insert characteristics it enables optimal machining of cylinder liners where high cutting speed under dry conditions are the norm.



Case Study 1

- Workpiece material : Jacket / Cast Iron

Designation	Grade		Cutting condition			
			V (m/min)	f (mm/rev)	Ap (mm)	Type
SNGN 120412	AW20	70 pcs	450	0.3	3	Ext. Turning, Dry
	AW120	75 pcs				

Case Study 2

- Workpiece material : Jacket / Cast Iron

Designation	Grade		Cutting condition			
			V (m/min)	f (mm/rev)	Ap (mm)	Type
SNGA 150616	AW20	150 pcs	500	0.3	3	Ext. Turning, Dry
	AW120	190 pcs				

Item list

Item No.	Designation
5703580	CNGA 120408 AW120
5703415	CNGN 120412 AW120
5703414	CNGN 120712 AW120
6130277	CNGN 120716 AW120
5703581	DNGN 150708 AW120
5703582	DNGN 150712 AW120
5703750	SCGN 090412 AW120
6130278	SNGN 120404 AW120
6130279	SNGN 120408 AW120
5703584	SNGN 120412 AW120
6130280	SNGN 120416 AW120
6118737	SNGN 120708 AW120
5703586	SNGN 120712 AW120
5703587	SNGN 120716 AW120
6130281	TNGN 160408 AW120
5703751	TNGN 160412 AW120
6130282	TNGN 160416 AW120

- Standard edge preparation : 0.2mm X 20°
- Special edge preparation is supplied by request

Application Area

- Workpiece Material : Cast Iron

